

Appendix 4

Mean temperature and wind speeds for the data driving vapour exposure

Clare Butler Ellis, Clive Tuck

A methodology for selecting sites for meteorological data for running the PEARL-OPS model in BROWSE was described in Appendix 3. The sites actually chosen for the latest version were also determined by the availability of data, and were :

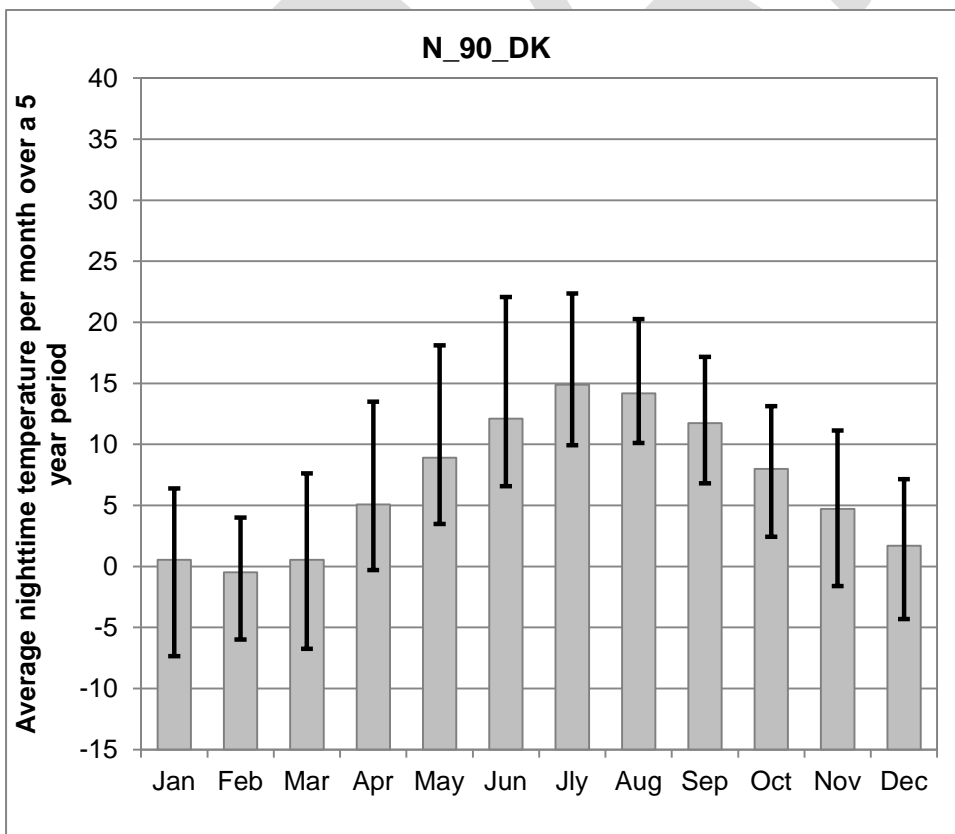
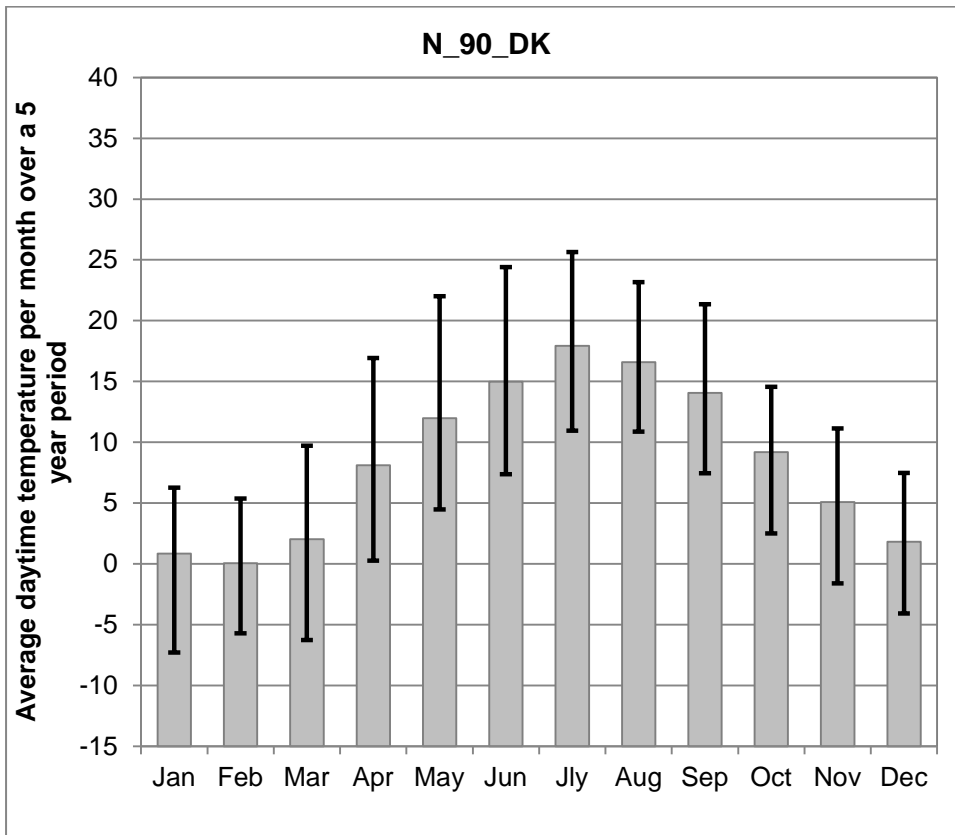
Zone	Country	Location	Grid ref
Northern	Denmark	Soreoe	55.49N, 11.64E
Central	Germany	Lahr	48.22°N, 7.50°E
Central	Hungary	Szentgotthard / Farkasfa	46°55'N, 16°19'E
Southern	Italy	Borgo Cioffi	40.52N, 14.96E
Southern	Spain	Las Majadas del Tietar	39.94°N, 5.77°W

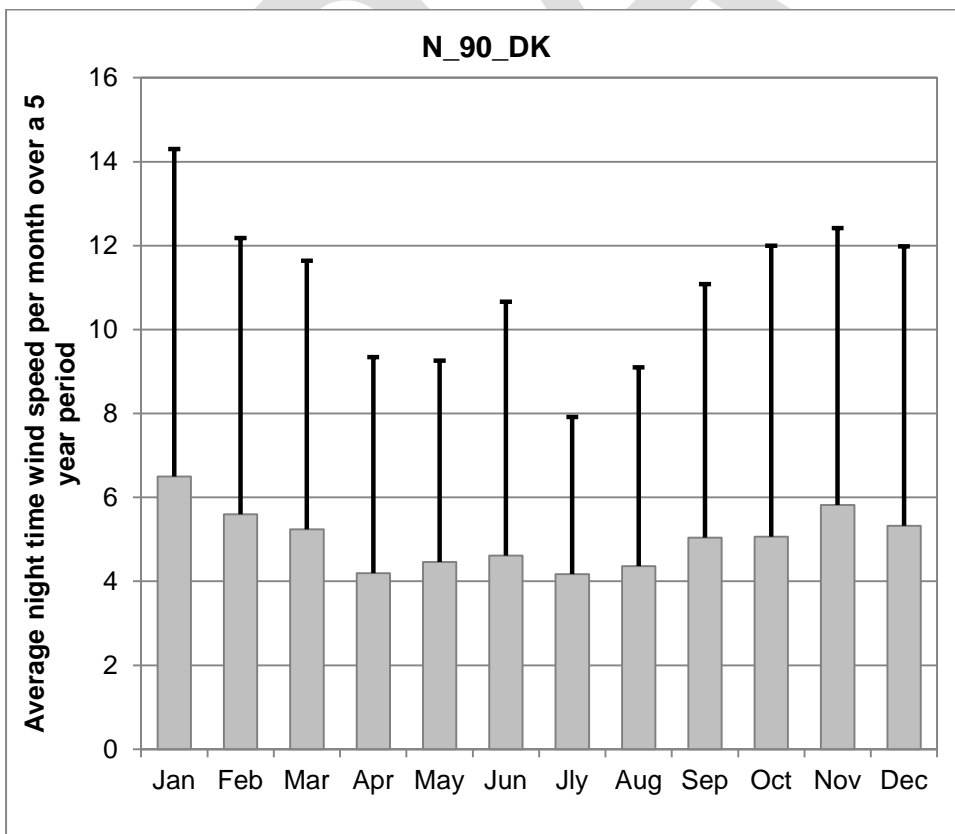
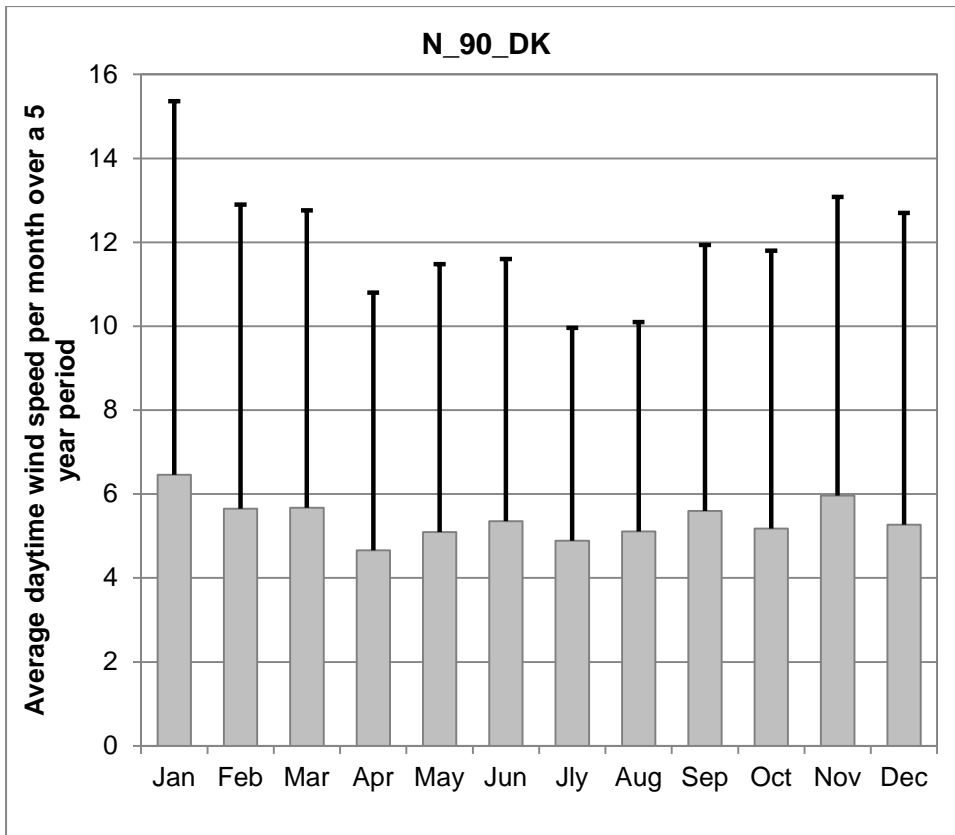
Five years of data were obtained, and averaged over each month. Only months from April to September (inclusive) are used in the exposure modelling, although data for all months are presented below.

The data are split into day time and night time (day time being relevant for workers, and both day and night for residents and bystanders).

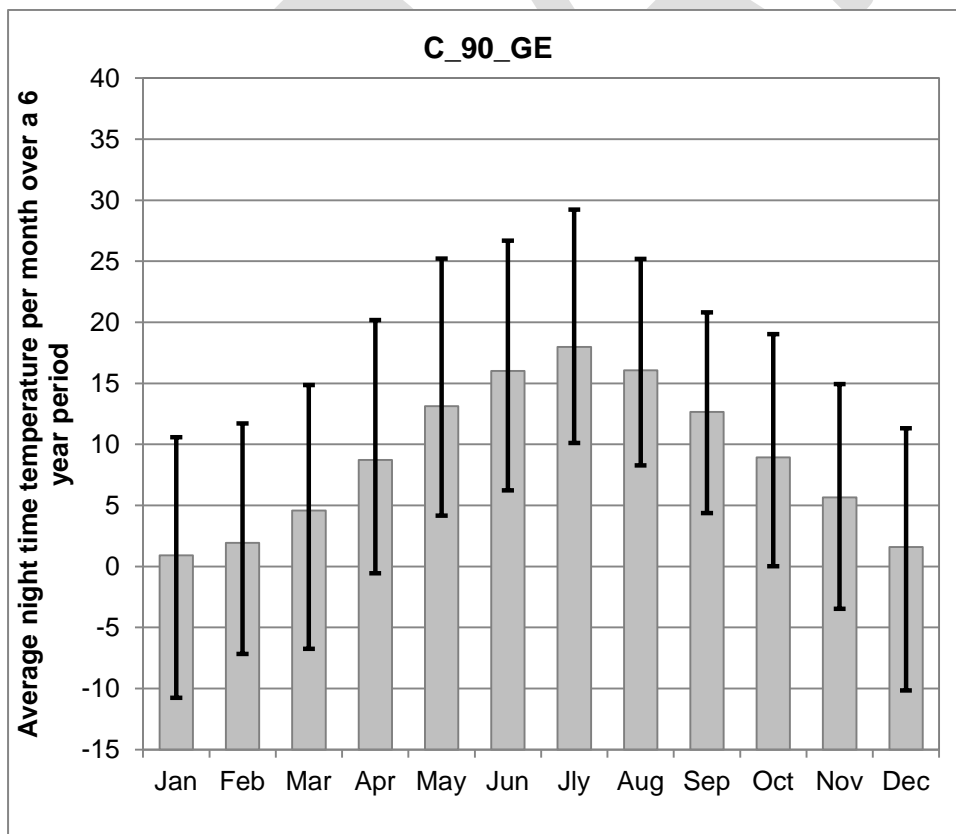
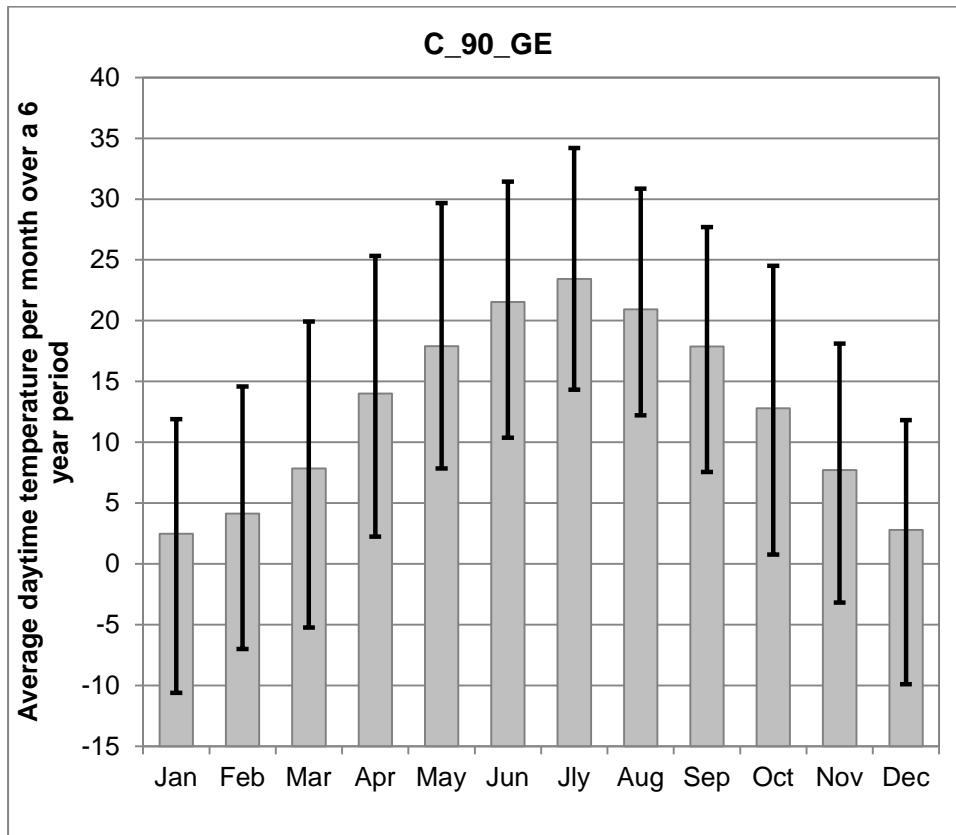
The bars show mean values of the max and min temperatures, and maximum wind speeds. Temperatures are in Celsius, measured at 1.5 m height, and wind speeds in m/s, measured at 10.0 m height.

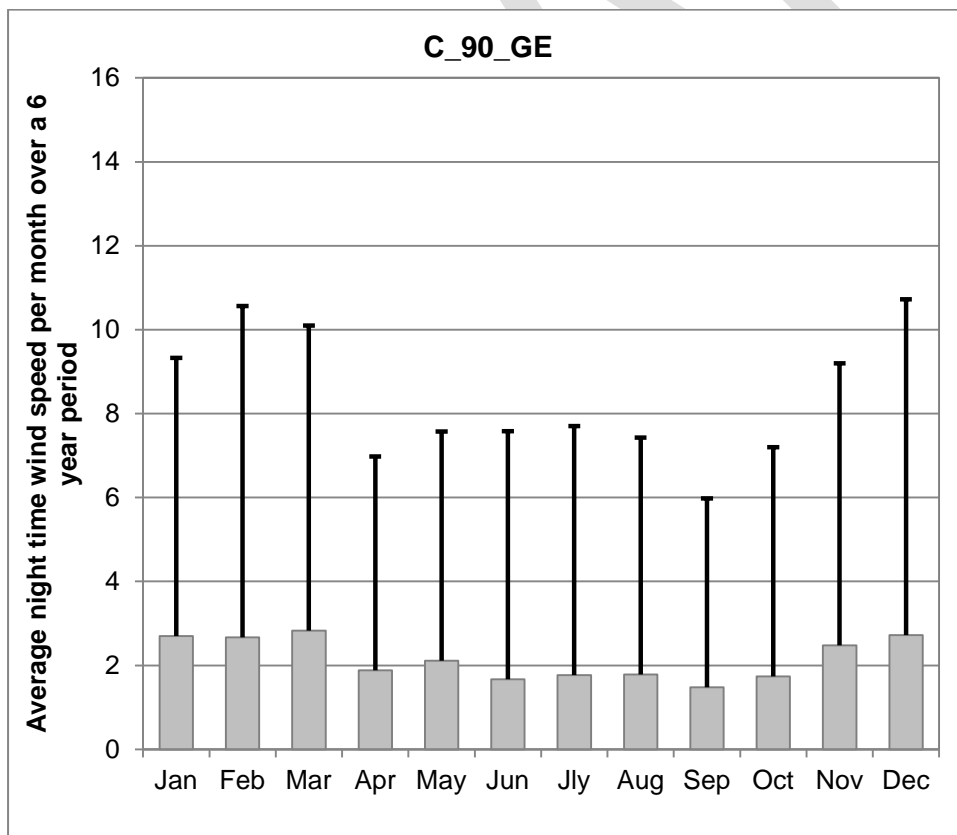
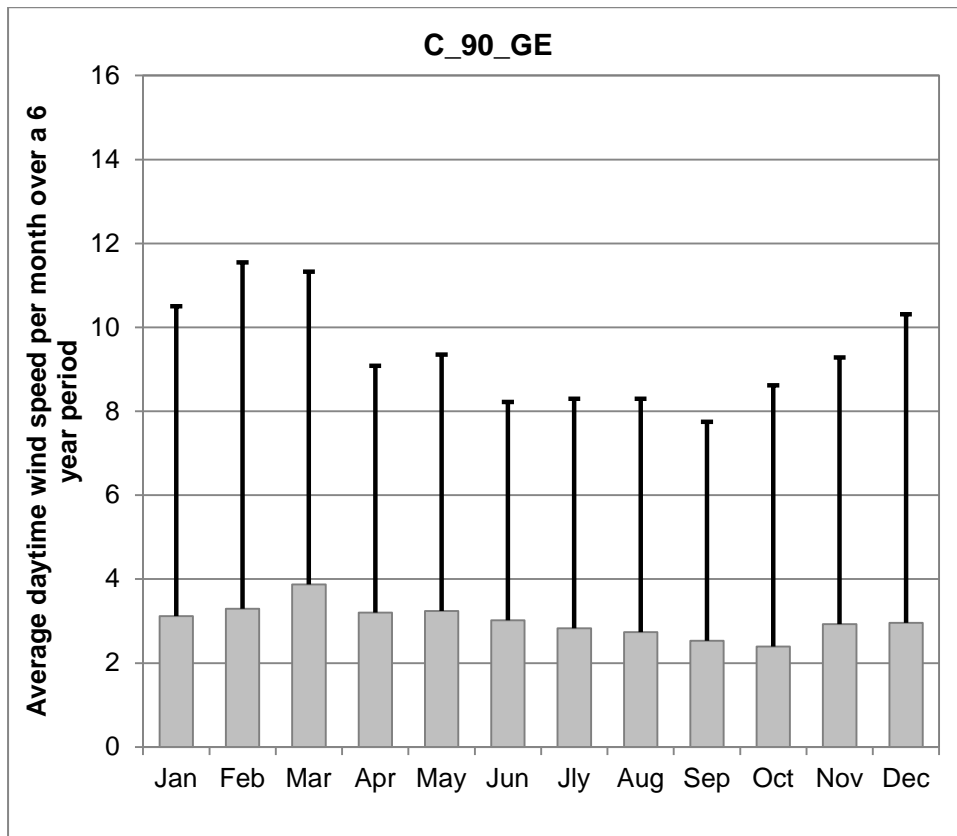
1. Denmark



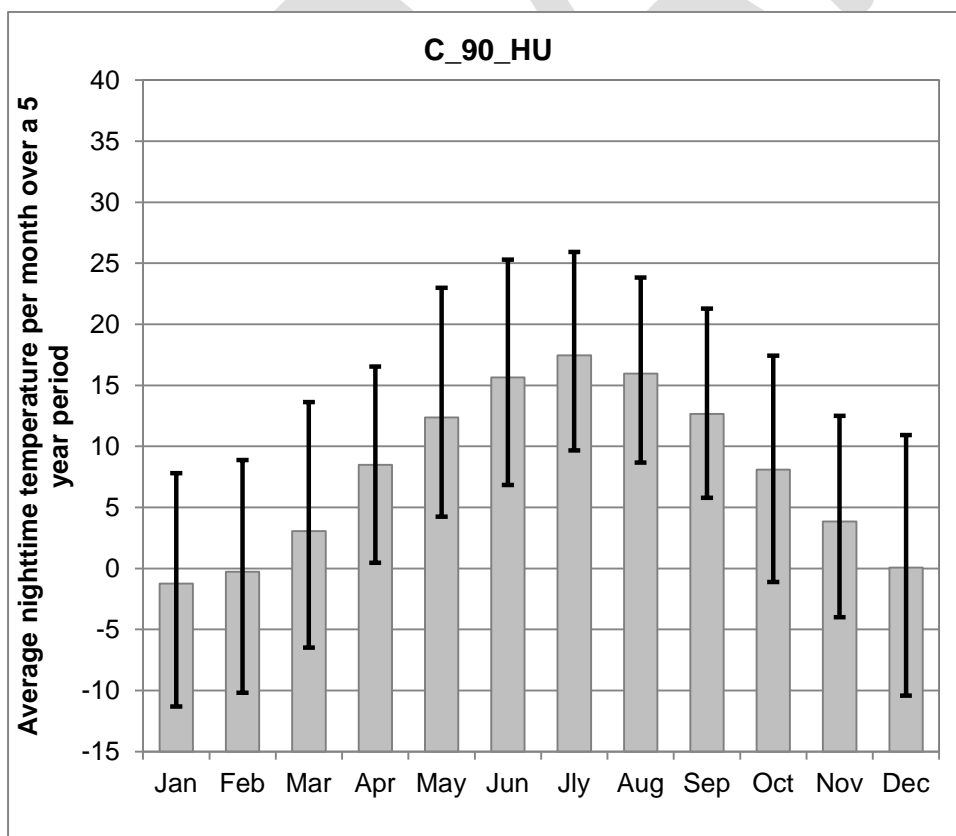
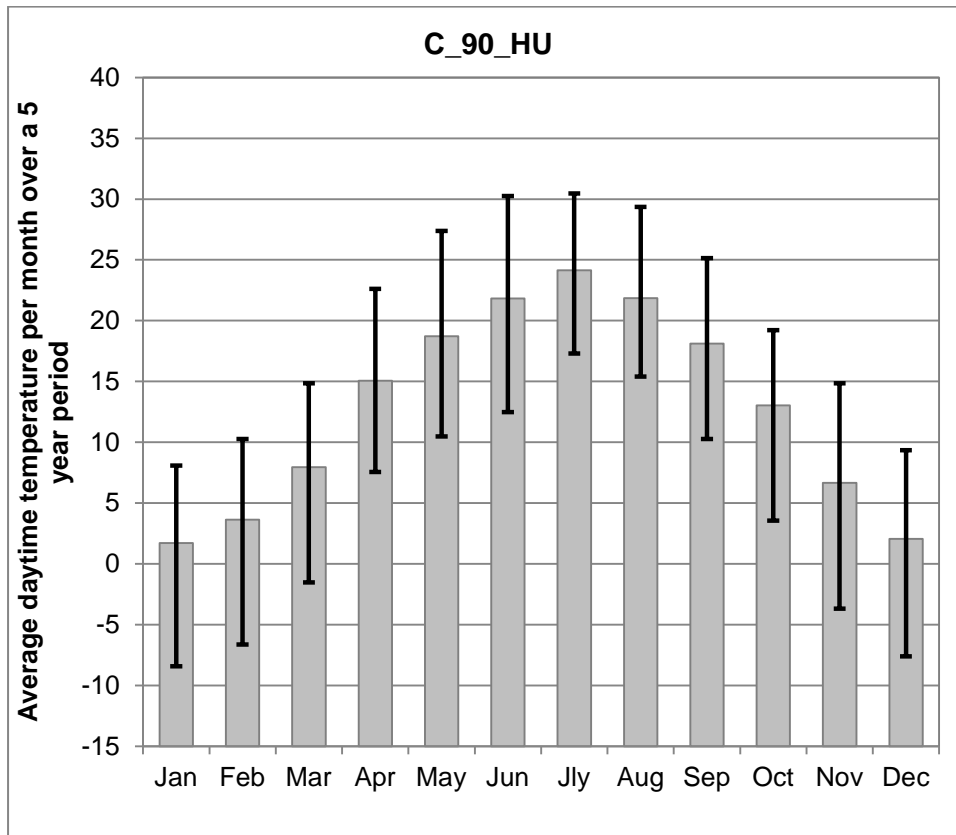


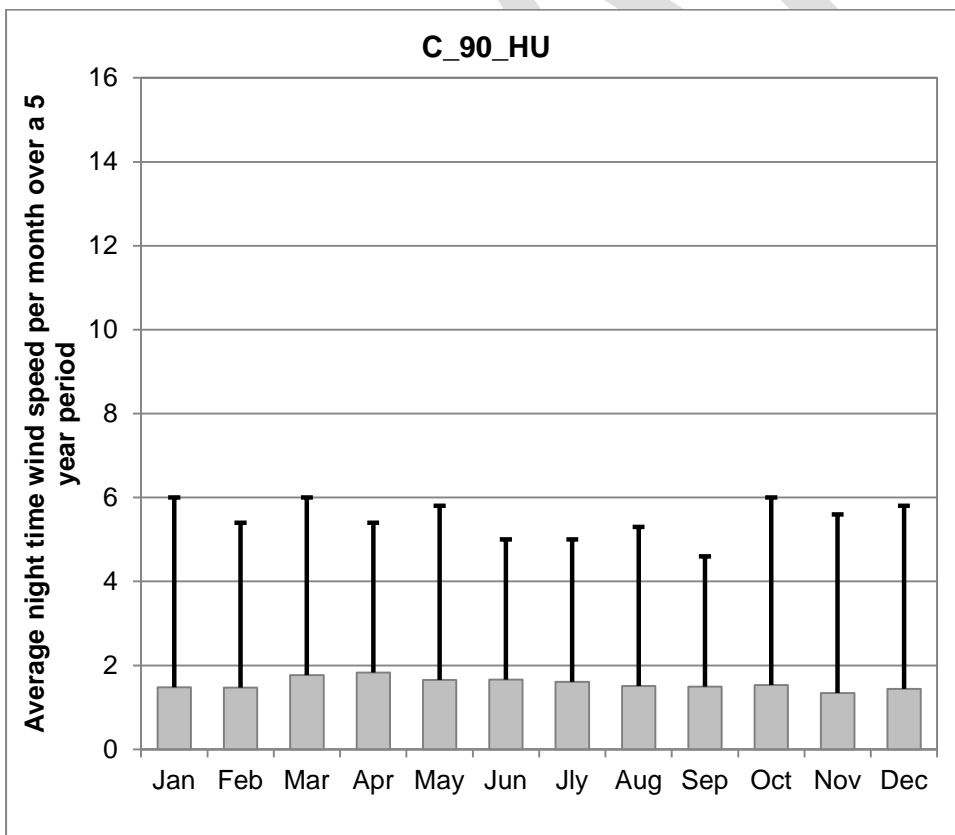
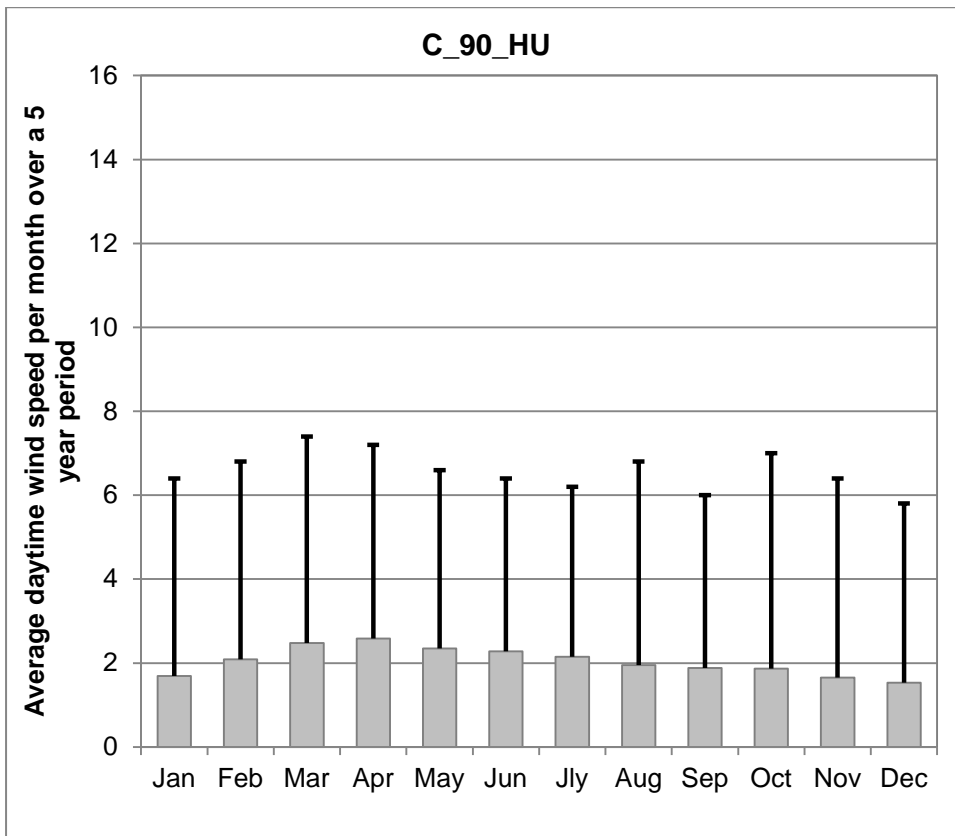
2. Germany



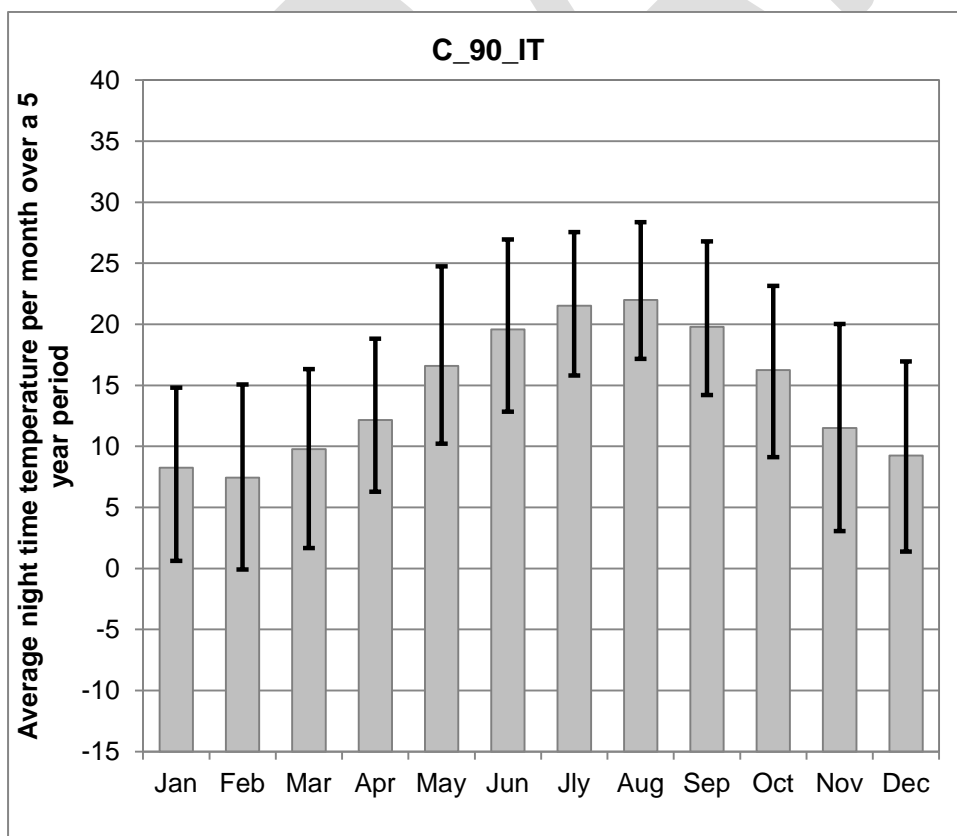
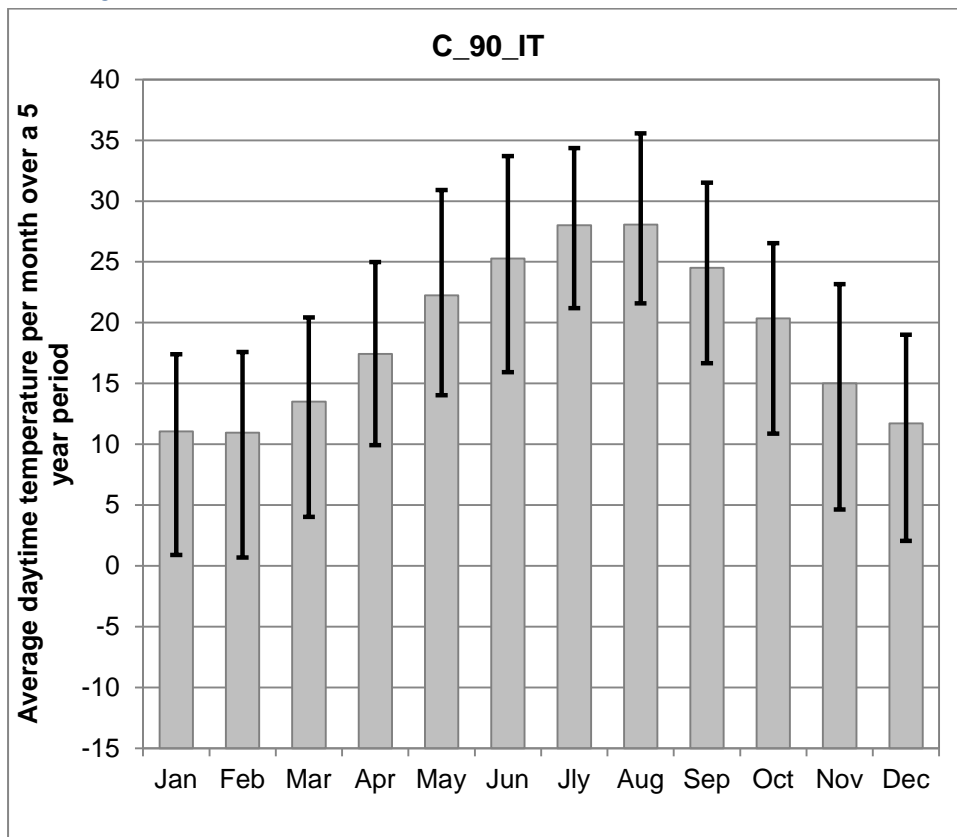


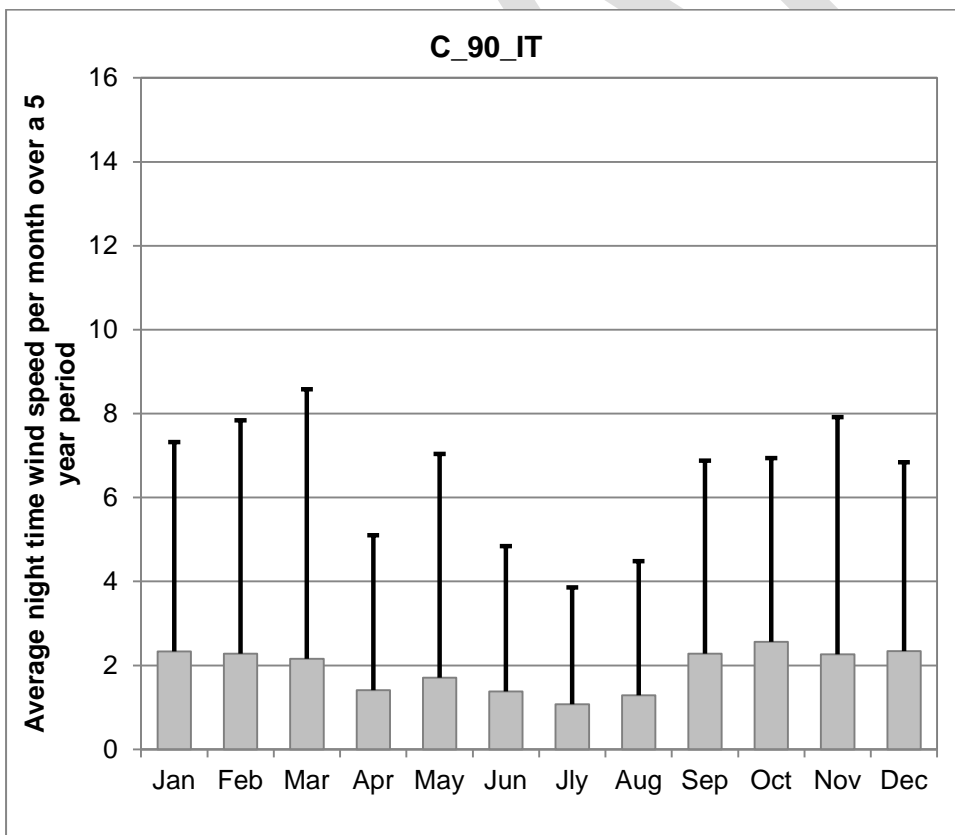
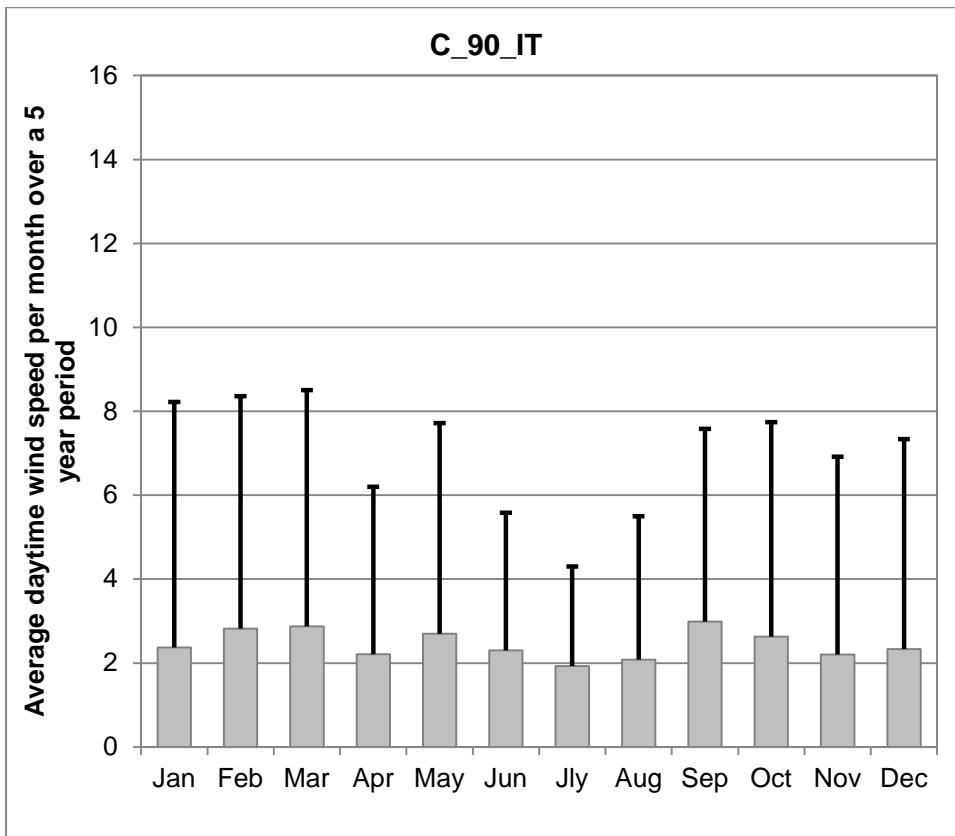
3. Hungary





4. Italy





5. Spain

